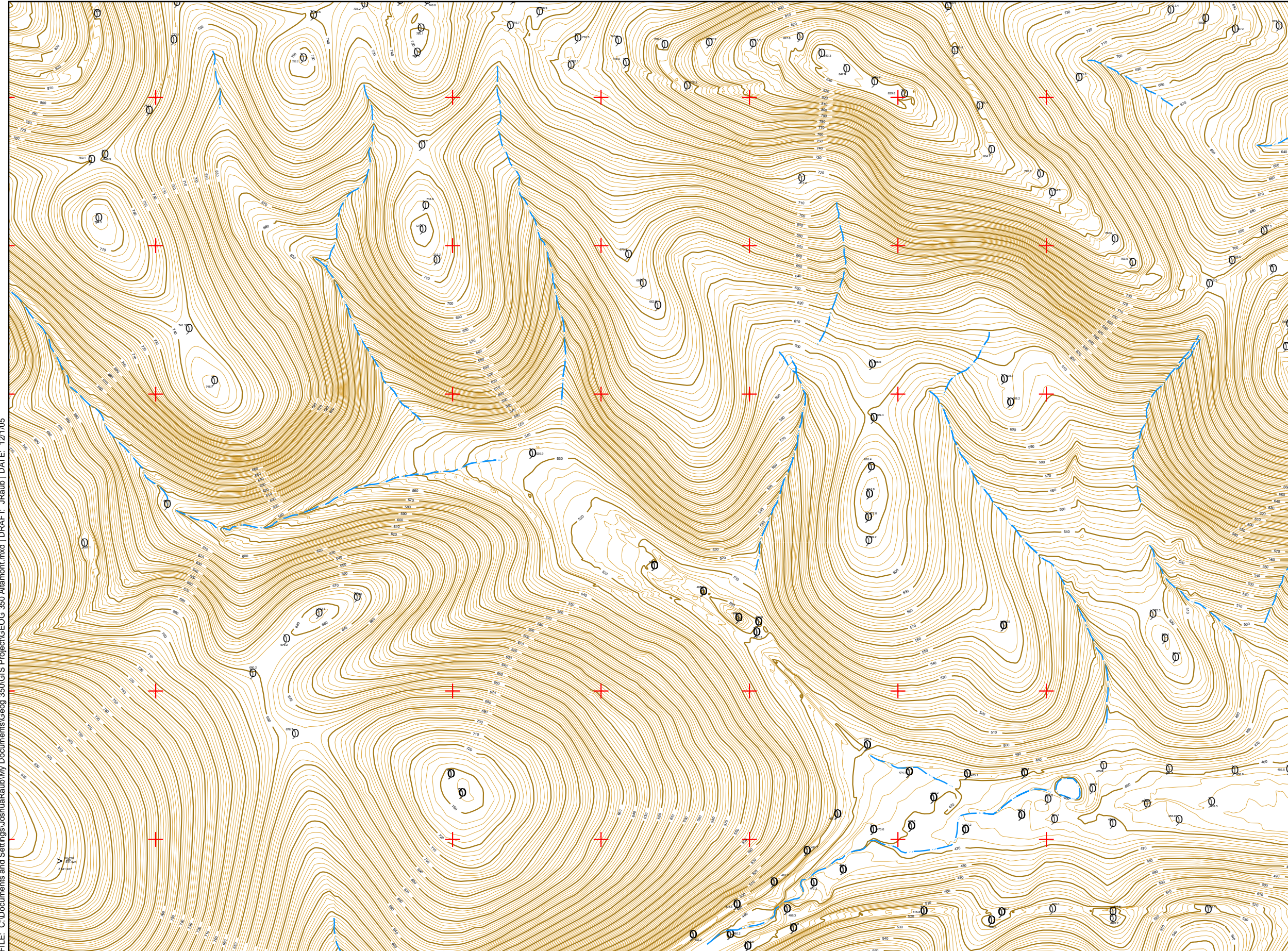


ALTAMONT PASS TOPOGRAPHY

Date of topography: May 2004

Author: Joshua Raub

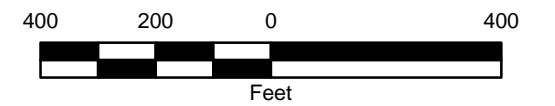


FILE: C:\Documents and Settings\JoshuaRaub\My Documents\Geog 350\GIS Project\GEOG 350 Altamont.mxd | DRAFT: JRaub | DATE: 12/1/05

Legend

- > Control Points
- Coordinate Grid
- Waterways
- ⊙ Spot Elevation
- Intermediate Contour
- Index Contour

1



Note:

1. Topographic contours based on 1992 base aerial survey and May 2004 update, flown by Walker & Associates.
2. Original topographic information provided in AutoCAD 2000 format.